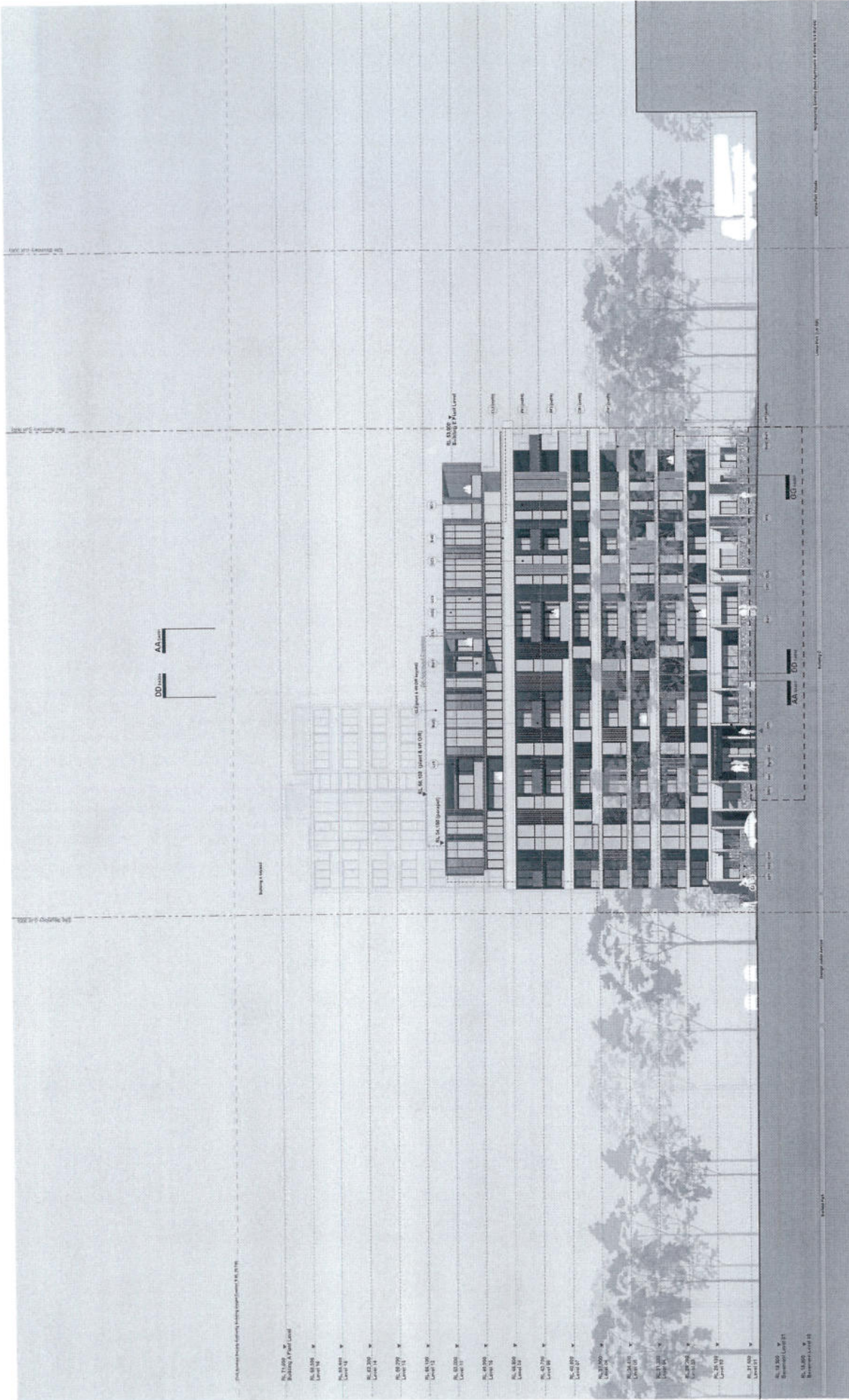


# ATTACHMENT A



- Multiple of Pitches Legend**
- 01 - 0.5m Pitch
  - 02 - 1.0m Pitch
  - 03 - 1.5m Pitch
  - 04 - 2.0m Pitch
  - 05 - 2.5m Pitch
  - 06 - 3.0m Pitch
  - 07 - 3.5m Pitch
  - 08 - 4.0m Pitch
  - 09 - 4.5m Pitch
  - 10 - 5.0m Pitch
  - 11 - 5.5m Pitch
  - 12 - 6.0m Pitch
  - 13 - 6.5m Pitch
  - 14 - 7.0m Pitch
  - 15 - 7.5m Pitch
  - 16 - 8.0m Pitch
  - 17 - 8.5m Pitch
  - 18 - 9.0m Pitch
  - 19 - 9.5m Pitch
  - 20 - 10.0m Pitch
  - 21 - 10.5m Pitch
  - 22 - 11.0m Pitch
  - 23 - 11.5m Pitch
  - 24 - 12.0m Pitch
  - 25 - 12.5m Pitch
  - 26 - 13.0m Pitch
  - 27 - 13.5m Pitch
  - 28 - 14.0m Pitch
  - 29 - 14.5m Pitch
  - 30 - 15.0m Pitch
  - 31 - 15.5m Pitch
  - 32 - 16.0m Pitch
  - 33 - 16.5m Pitch
  - 34 - 17.0m Pitch
  - 35 - 17.5m Pitch
  - 36 - 18.0m Pitch
  - 37 - 18.5m Pitch
  - 38 - 19.0m Pitch
  - 39 - 19.5m Pitch
  - 40 - 20.0m Pitch
  - 41 - 20.5m Pitch
  - 42 - 21.0m Pitch
  - 43 - 21.5m Pitch
  - 44 - 22.0m Pitch
  - 45 - 22.5m Pitch
  - 46 - 23.0m Pitch
  - 47 - 23.5m Pitch
  - 48 - 24.0m Pitch
  - 49 - 24.5m Pitch
  - 50 - 25.0m Pitch
  - 51 - 25.5m Pitch
  - 52 - 26.0m Pitch
  - 53 - 26.5m Pitch
  - 54 - 27.0m Pitch
  - 55 - 27.5m Pitch
  - 56 - 28.0m Pitch
  - 57 - 28.5m Pitch
  - 58 - 29.0m Pitch
  - 59 - 29.5m Pitch
  - 60 - 30.0m Pitch
  - 61 - 30.5m Pitch
  - 62 - 31.0m Pitch
  - 63 - 31.5m Pitch
  - 64 - 32.0m Pitch
  - 65 - 32.5m Pitch
  - 66 - 33.0m Pitch
  - 67 - 33.5m Pitch
  - 68 - 34.0m Pitch
  - 69 - 34.5m Pitch
  - 70 - 35.0m Pitch
  - 71 - 35.5m Pitch
  - 72 - 36.0m Pitch
  - 73 - 36.5m Pitch
  - 74 - 37.0m Pitch
  - 75 - 37.5m Pitch
  - 76 - 38.0m Pitch
  - 77 - 38.5m Pitch
  - 78 - 39.0m Pitch
  - 79 - 39.5m Pitch
  - 80 - 40.0m Pitch
  - 81 - 40.5m Pitch
  - 82 - 41.0m Pitch
  - 83 - 41.5m Pitch
  - 84 - 42.0m Pitch
  - 85 - 42.5m Pitch
  - 86 - 43.0m Pitch
  - 87 - 43.5m Pitch
  - 88 - 44.0m Pitch
  - 89 - 44.5m Pitch
  - 90 - 45.0m Pitch
  - 91 - 45.5m Pitch
  - 92 - 46.0m Pitch
  - 93 - 46.5m Pitch
  - 94 - 47.0m Pitch
  - 95 - 47.5m Pitch
  - 96 - 48.0m Pitch
  - 97 - 48.5m Pitch
  - 98 - 49.0m Pitch
  - 99 - 49.5m Pitch
  - 100 - 50.0m Pitch

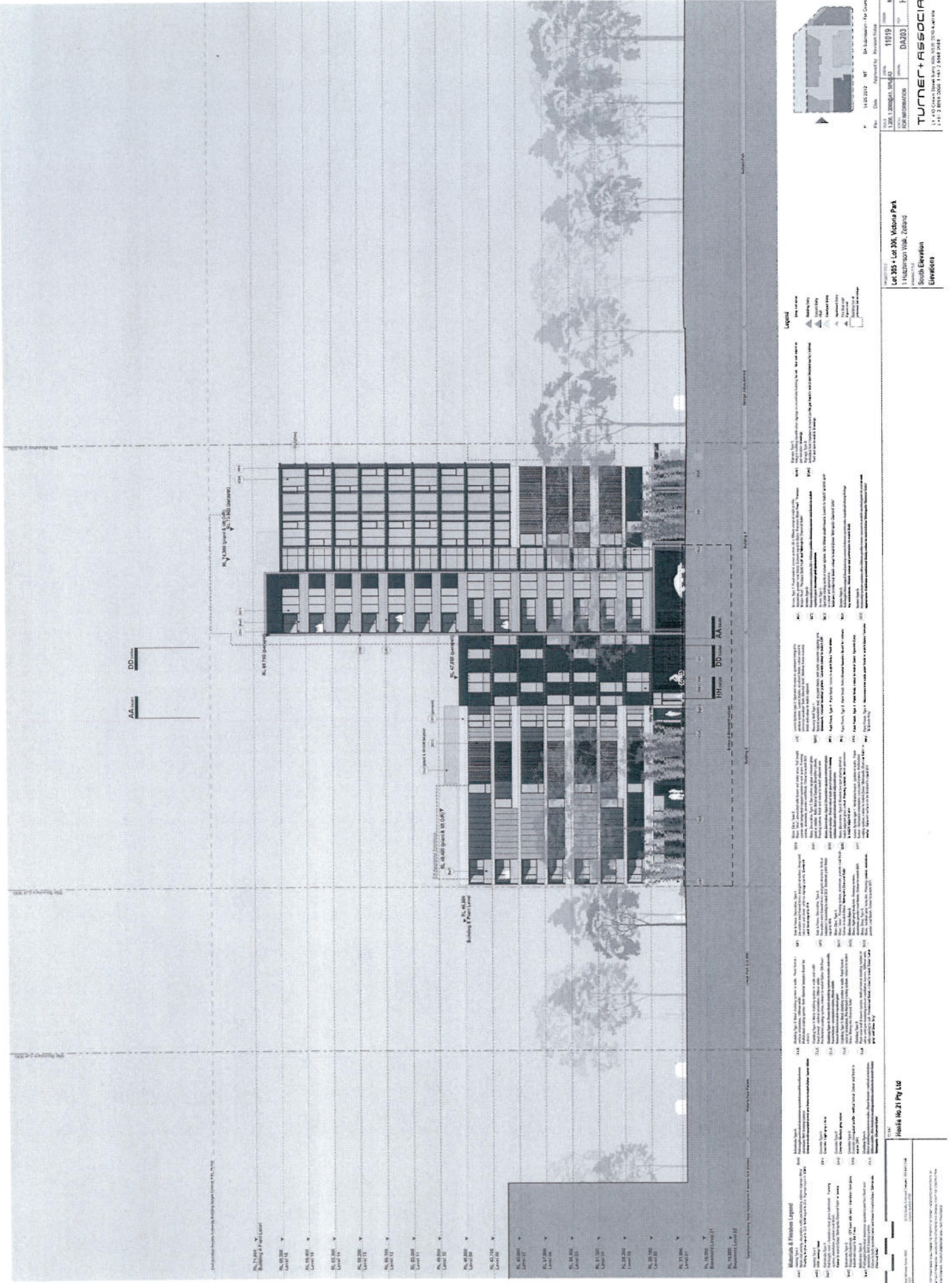
Project: 10109  
 Date: 14/02/2012  
 Approved by: [Signature]  
 Scale: 1:100  
 Drawing No: DA001  
 Drawing Title: [Title]  
 Client: [Client Name]  
 Designer: [Designer Name]  
 Date: [Date]  
 Scale: [Scale]  
 Drawing No: [Drawing No]  
 Drawing Title: [Drawing Title]

Let 305 + Lot 306, Victoria Park  
 1 High Street, Warr, Zealand  
 North Elevation  
 Elevation

Housley Ho 21 Pty Ltd  
 1/111...  
 1/111...  
 1/111...



# ATTACHMENT A



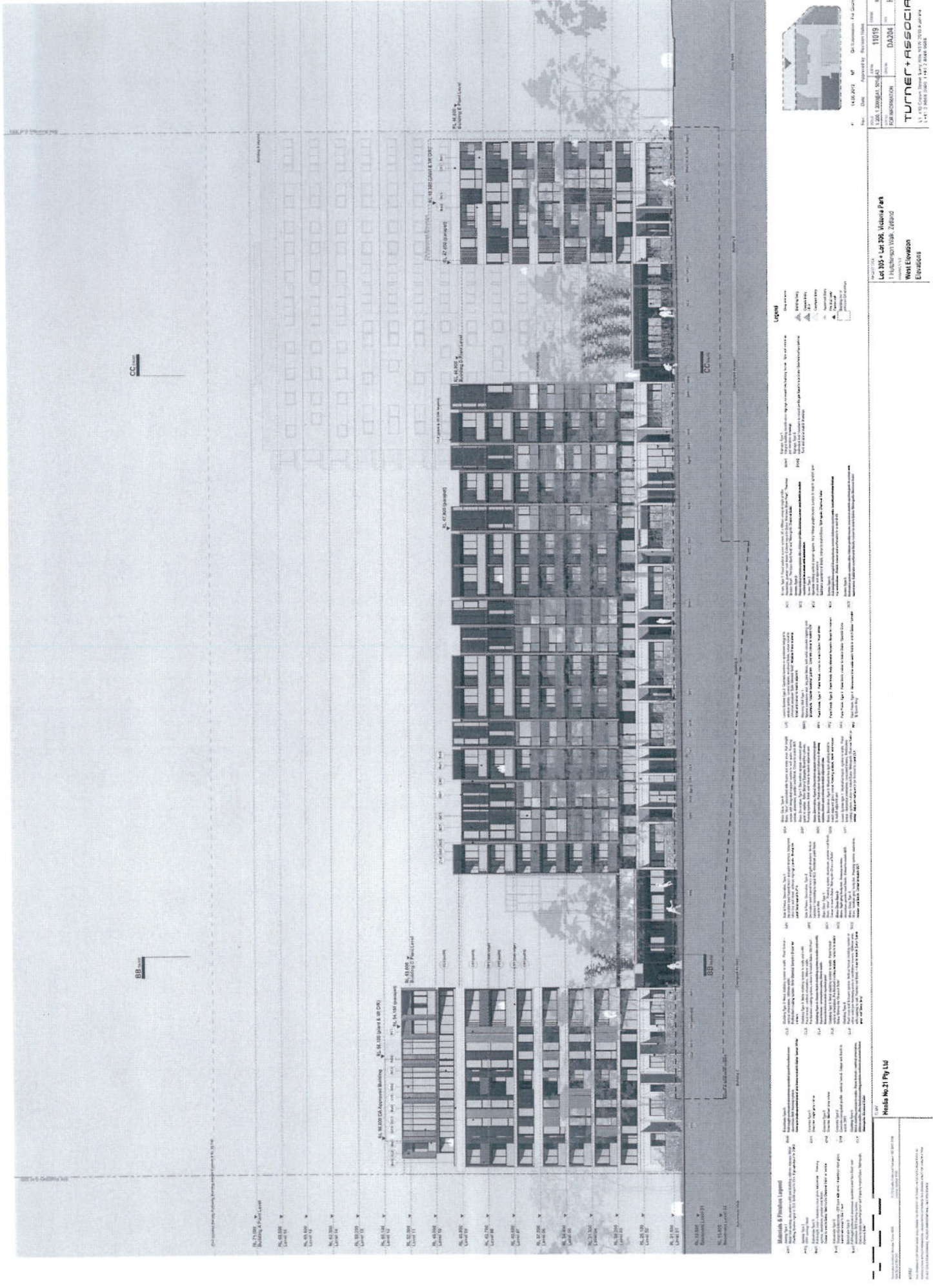
Project: 11019  
 Date: 11/03/2024  
 Scale: DIA200  
 Author: H  
 Check: H  
 Title: 11019

Lot 35 + Lot 36, Victoria Park  
 1 Huntington Walk, Odessa  
 South Eleventh  
 Eleventh

TURNER ASSOCIATES  
 1412 20th Street NW  
 Seattle, WA 98107  
 Tel: 206.461.2121  
 Fax: 206.461.2122

HOK Inc.  
 11019

# ATTACHMENT A



CC

BB

AA

## Legend

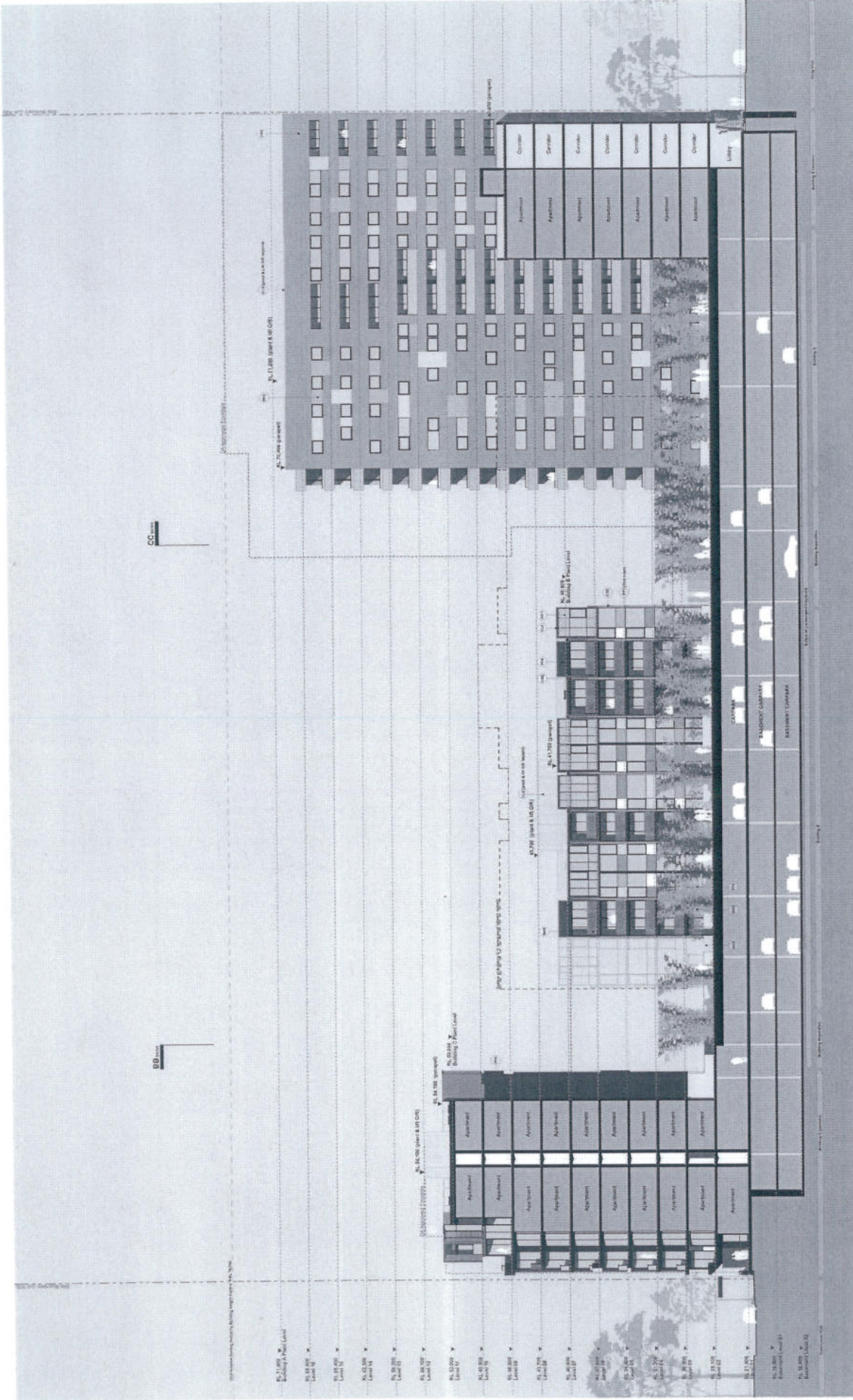
Legend	Description	Symbol	Color/Pattern	Notes	Material/Finish	Notes	Material/Finish	Notes	Material/Finish	Notes	Material/Finish
1	Brick	[Pattern]	[Color]	[Notes]	[Material/Finish]	[Notes]	[Material/Finish]	[Notes]	[Material/Finish]	[Notes]	[Material/Finish]
2	Stone	[Pattern]	[Color]	[Notes]	[Material/Finish]	[Notes]	[Material/Finish]	[Notes]	[Material/Finish]	[Notes]	[Material/Finish]
3	Glass	[Symbol]	[Color]	[Notes]	[Material/Finish]	[Notes]	[Material/Finish]	[Notes]	[Material/Finish]	[Notes]	[Material/Finish]
4	Metal	[Symbol]	[Color]	[Notes]	[Material/Finish]	[Notes]	[Material/Finish]	[Notes]	[Material/Finish]	[Notes]	[Material/Finish]
5	Paint	[Symbol]	[Color]	[Notes]	[Material/Finish]	[Notes]	[Material/Finish]	[Notes]	[Material/Finish]	[Notes]	[Material/Finish]

Project Name: 1400 West Alameda Parkway  
Date: 11/19/19  
Turner + Associates  
1400 West Alameda Parkway, Suite 200  
San Francisco, CA 94118

Main Elevation  
Main Elevation  
Main Elevation

Main Elevation  
Main Elevation  
Main Elevation

# ATTACHMENT A



**Materials & Finishes Legend**

001	Concrete	002	Brick
003	Paint	004	Carpet
005	Wood	006	Tile
007	Glass	008	Aluminum
009	Steel	010	Plaster
011	Acoustic	012	Insulation
013	Lighting	014	Security
015	Handrails	016	Signage
017	Planters	018	Landscaping
019	Roofing	020	Drainage
021	Structural	022	Foundation
023	Exterior	024	Interior
025	Site	026	Utility
027	Other	028	Notes

**Legend**

- 001 Concrete
- 002 Brick
- 003 Paint
- 004 Carpet
- 005 Wood
- 006 Tile
- 007 Glass
- 008 Aluminum
- 009 Steel
- 010 Plaster
- 011 Acoustic
- 012 Insulation
- 013 Lighting
- 014 Security
- 015 Handrails
- 016 Signage
- 017 Planters
- 018 Landscaping
- 019 Roofing
- 020 Drainage
- 021 Structural
- 022 Foundation
- 023 Exterior
- 024 Interior
- 025 Site
- 026 Utility
- 027 Other
- 028 Notes

**Notes**

1. All dimensions are in meters unless otherwise stated.

2. Refer to the site plan for location of building and surrounding infrastructure.

3. The building is to be constructed in accordance with the relevant building codes and standards.

4. The design is based on the information provided and is subject to change without notice.

5. The architect is not responsible for any errors or omissions in the drawings.

6. The drawings are to be used for information only and are not to be used for construction without the approval of the architect.

7. The drawings are to be used for information only and are not to be used for construction without the approval of the architect.

8. The drawings are to be used for information only and are not to be used for construction without the approval of the architect.

9. The drawings are to be used for information only and are not to be used for construction without the approval of the architect.

10. The drawings are to be used for information only and are not to be used for construction without the approval of the architect.

**Client:** HomeLife Real Estate Ltd

**Project:** Lot 305 + Lot 306, Victoria Park, 1 Fleeting Way, Zetong

**Section:** Section A

**Date:** 14.08.2015

**Scale:** 1:100

**Drawn by:** [Name]

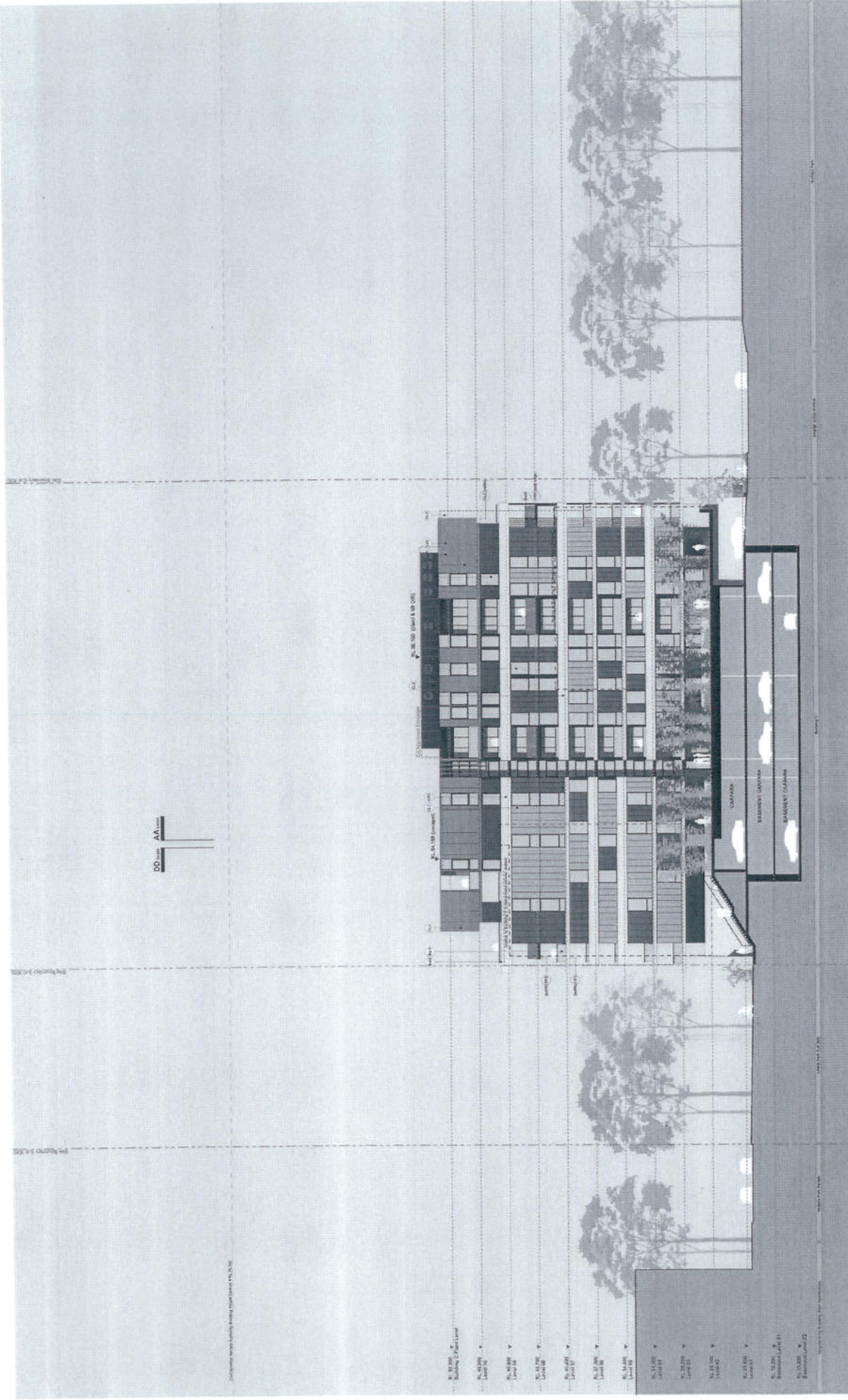
**Checked by:** [Name]

**Approved by:** [Name]

**Turner + Associates**

14.08.2015 14:08:20 14.08.2015 14:08:20

# ATTACHMENT A



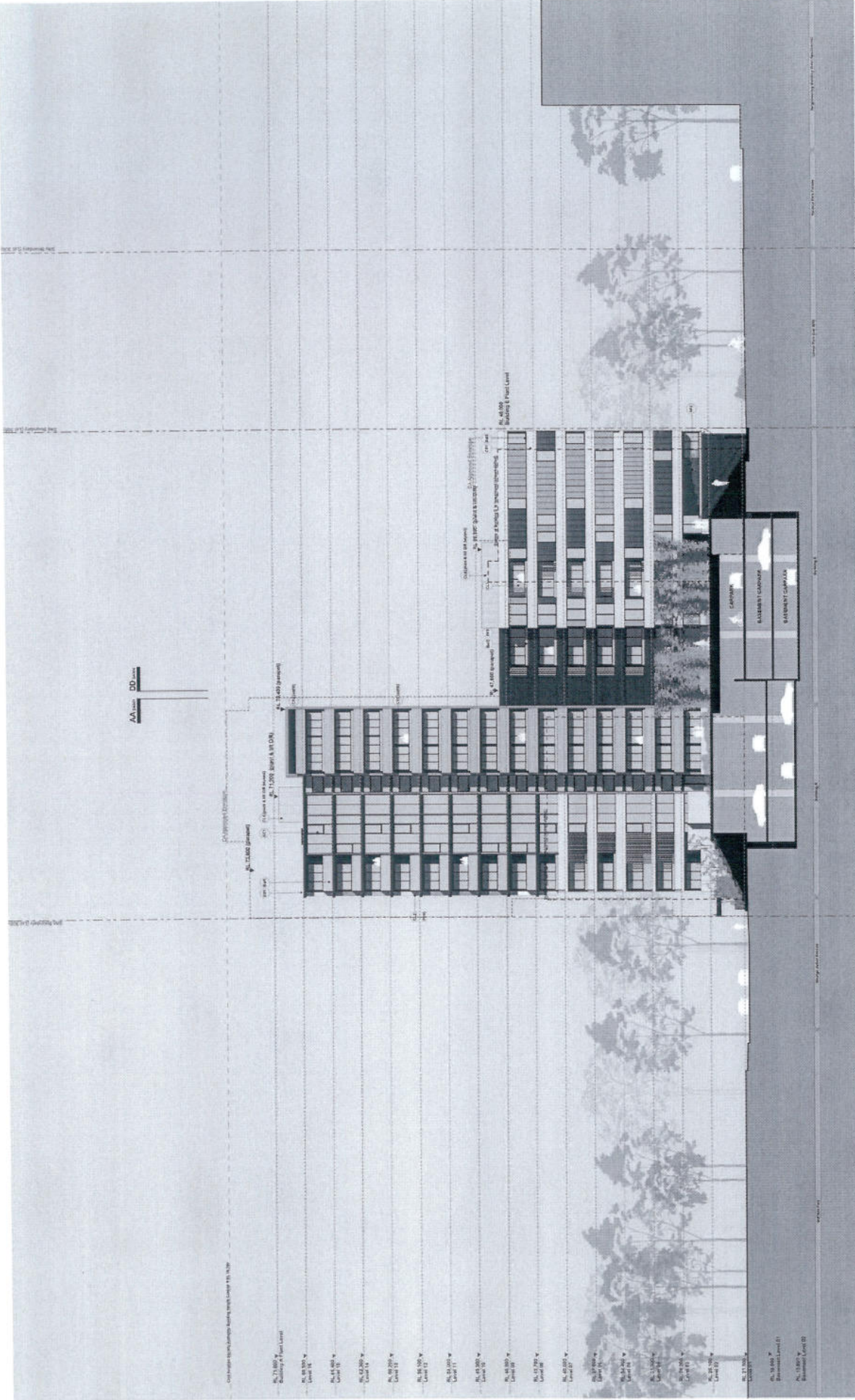
- Materials & Finishes Legend**
- 001 Concrete (see specification)
  - 002 Brickwork (see specification)
  - 003 Masonry (see specification)
  - 004 Plaster (see specification)
  - 005 Paint (see specification)
  - 006 Timber (see specification)
  - 007 Glass (see specification)
  - 008 Metal (see specification)
  - 009 Stone (see specification)
  - 010 Terrazzo (see specification)
  - 011 Carpet (see specification)
  - 012 Tiles (see specification)
  - 013 Laminate (see specification)
  - 014 Acoustic (see specification)
  - 015 Insulation (see specification)
  - 016 Waterproofing (see specification)
  - 017 Drainage (see specification)
  - 018 Lighting (see specification)
  - 019 Security (see specification)
  - 020 Fire (see specification)
  - 021 Sound (see specification)
  - 022 Vibration (see specification)
  - 023 Air (see specification)
  - 024 Humidity (see specification)
  - 025 Temperature (see specification)
  - 026 Noise (see specification)
  - 027 Air Quality (see specification)
  - 028 Energy (see specification)
  - 029 Sustainability (see specification)
  - 030 Other (see specification)

Date: 18.02.2015  
 Scale: As Shown  
 Project: 11819  
 Drawing: DA302  
 Client: F  
 Designer: Turner + Associates  
 11, 12 Green Street, Sydney NSW 2010 Australia  
 T +61 2 9238 2000 F +61 2 9238 2001

Lot 305 - Lot 308, Victoria Park  
 11 Huddings Way, Zetland  
 Section B  
 Section B

Printer No 27 Pty Ltd  
 11/11/2015 10:00:00 AM  
 11/11/2015 10:00:00 AM

# ATTACHMENT A



- ### Legend
- Existing Building
  - New Building
  - Garage
  - Elevated Carport
  - Roof
  - Window
  - Door
  - Cladding
  - Material
  - Color

**Material Schedule**

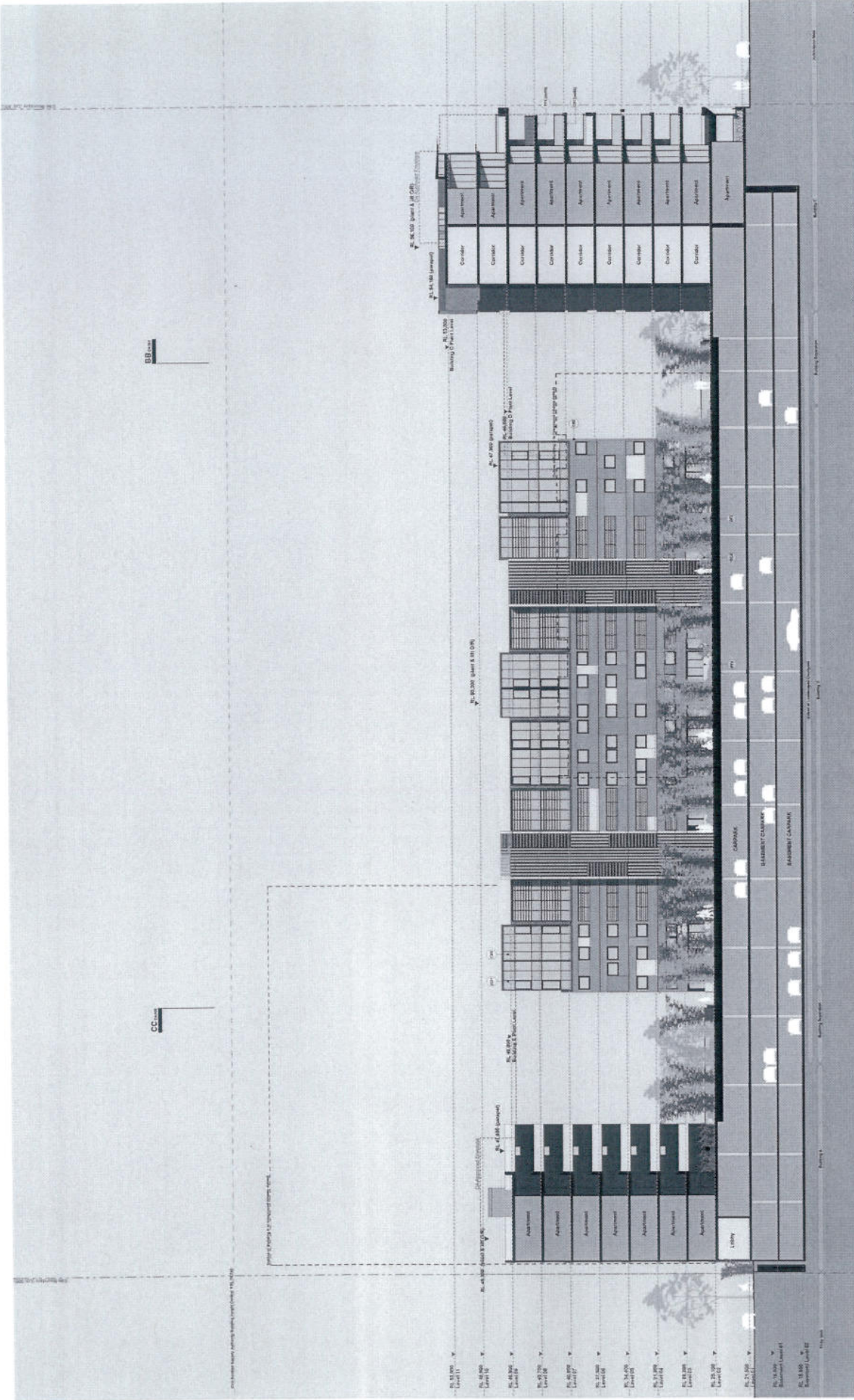
Item No.	Description	Notes
001	Concrete	Color: Light Grey
002	Brick	Color: Red
003	Cladding	Color: Dark Grey
004	Window	Color: White
005	Door	Color: White
006	Roof	Color: Dark Grey
007	Material	Color: Dark Grey
008	Color	Color: Dark Grey

Date: 14/05/2024  
 Scale: 1:1000  
 Project: 11019  
 Drawing: D4303  
 Sheet: F  
 Turned & Associates  
 14/150 Collins Street, Melbourne, VIC 3000  
 Phone: +61 (0)3 9647 1200

PROJECT  
**Lot 205 + Lot 304, Victoria Park**  
 1 Heald Street, Warr, Victoria  
 SECTION C  
 Section C

Housko No. 21 Pty Ltd  
 1/111 Collins Street, Melbourne, VIC 3000  
 Phone: +61 (0)3 9647 1200

# ATTACHMENT A



- Legend**
- Apartment
  - Corridor
  - Lobby
  - Room
  - Stair
  - Elevator
  - Structural Column
  - Structural Wall
  - Structural Slab
  - Structural Beam
  - Structural Column
  - Structural Wall
  - Structural Slab
  - Structural Beam

**Materials & Finishes Legend**

- 101 - 10' x 10' Corridor
- 102 - 10' x 10' Corridor
- 103 - 10' x 10' Corridor
- 104 - 10' x 10' Corridor
- 105 - 10' x 10' Corridor
- 106 - 10' x 10' Corridor
- 107 - 10' x 10' Corridor
- 108 - 10' x 10' Corridor
- 109 - 10' x 10' Corridor
- 110 - 10' x 10' Corridor
- 111 - 10' x 10' Corridor
- 112 - 10' x 10' Corridor
- 113 - 10' x 10' Corridor
- 114 - 10' x 10' Corridor
- 115 - 10' x 10' Corridor
- 116 - 10' x 10' Corridor
- 117 - 10' x 10' Corridor
- 118 - 10' x 10' Corridor
- 119 - 10' x 10' Corridor
- 120 - 10' x 10' Corridor
- 121 - 10' x 10' Corridor
- 122 - 10' x 10' Corridor
- 123 - 10' x 10' Corridor
- 124 - 10' x 10' Corridor
- 125 - 10' x 10' Corridor
- 126 - 10' x 10' Corridor
- 127 - 10' x 10' Corridor
- 128 - 10' x 10' Corridor
- 129 - 10' x 10' Corridor
- 130 - 10' x 10' Corridor
- 131 - 10' x 10' Corridor
- 132 - 10' x 10' Corridor
- 133 - 10' x 10' Corridor
- 134 - 10' x 10' Corridor
- 135 - 10' x 10' Corridor
- 136 - 10' x 10' Corridor
- 137 - 10' x 10' Corridor
- 138 - 10' x 10' Corridor
- 139 - 10' x 10' Corridor
- 140 - 10' x 10' Corridor
- 141 - 10' x 10' Corridor
- 142 - 10' x 10' Corridor
- 143 - 10' x 10' Corridor
- 144 - 10' x 10' Corridor
- 145 - 10' x 10' Corridor
- 146 - 10' x 10' Corridor
- 147 - 10' x 10' Corridor
- 148 - 10' x 10' Corridor
- 149 - 10' x 10' Corridor
- 150 - 10' x 10' Corridor
- 151 - 10' x 10' Corridor
- 152 - 10' x 10' Corridor
- 153 - 10' x 10' Corridor
- 154 - 10' x 10' Corridor
- 155 - 10' x 10' Corridor
- 156 - 10' x 10' Corridor
- 157 - 10' x 10' Corridor
- 158 - 10' x 10' Corridor
- 159 - 10' x 10' Corridor
- 160 - 10' x 10' Corridor
- 161 - 10' x 10' Corridor
- 162 - 10' x 10' Corridor
- 163 - 10' x 10' Corridor
- 164 - 10' x 10' Corridor
- 165 - 10' x 10' Corridor
- 166 - 10' x 10' Corridor
- 167 - 10' x 10' Corridor
- 168 - 10' x 10' Corridor
- 169 - 10' x 10' Corridor
- 170 - 10' x 10' Corridor
- 171 - 10' x 10' Corridor
- 172 - 10' x 10' Corridor
- 173 - 10' x 10' Corridor
- 174 - 10' x 10' Corridor
- 175 - 10' x 10' Corridor
- 176 - 10' x 10' Corridor
- 177 - 10' x 10' Corridor
- 178 - 10' x 10' Corridor
- 179 - 10' x 10' Corridor
- 180 - 10' x 10' Corridor
- 181 - 10' x 10' Corridor
- 182 - 10' x 10' Corridor
- 183 - 10' x 10' Corridor
- 184 - 10' x 10' Corridor
- 185 - 10' x 10' Corridor
- 186 - 10' x 10' Corridor
- 187 - 10' x 10' Corridor
- 188 - 10' x 10' Corridor
- 189 - 10' x 10' Corridor
- 190 - 10' x 10' Corridor
- 191 - 10' x 10' Corridor
- 192 - 10' x 10' Corridor
- 193 - 10' x 10' Corridor
- 194 - 10' x 10' Corridor
- 195 - 10' x 10' Corridor
- 196 - 10' x 10' Corridor
- 197 - 10' x 10' Corridor
- 198 - 10' x 10' Corridor
- 199 - 10' x 10' Corridor
- 200 - 10' x 10' Corridor

PROJECT: **Lot 395 + Lot 396, Victoria Park**  
 1 Hildesheim Way, Zelleg  
 SECTION: **Section D**  
 SECTION: **Section D**

DATE: 14.02.2012  
 DRAWN BY: [Name]  
 CHECKED BY: [Name]  
 APPROVED BY: [Name]

SCALE: 1:100  
 SHEET: DA304  
 TOTAL SHEETS: 4

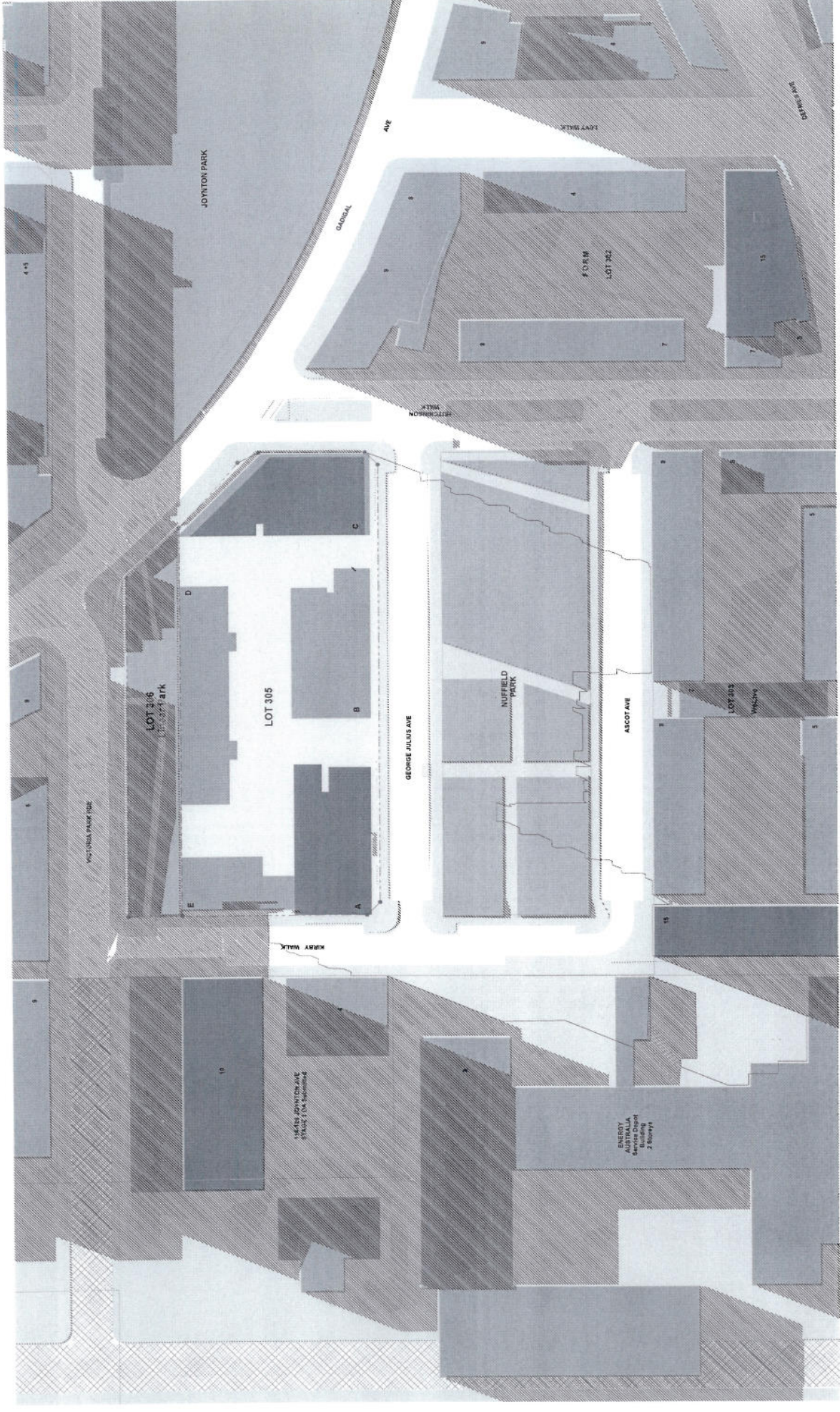
TURNER + ASSOCIATES  
 1/47, 2/488 2005, 1/47, 2/488 2005







# ATTACHMENT A



**Legend**

- Existing Buildings
- Additional building and lot footprint

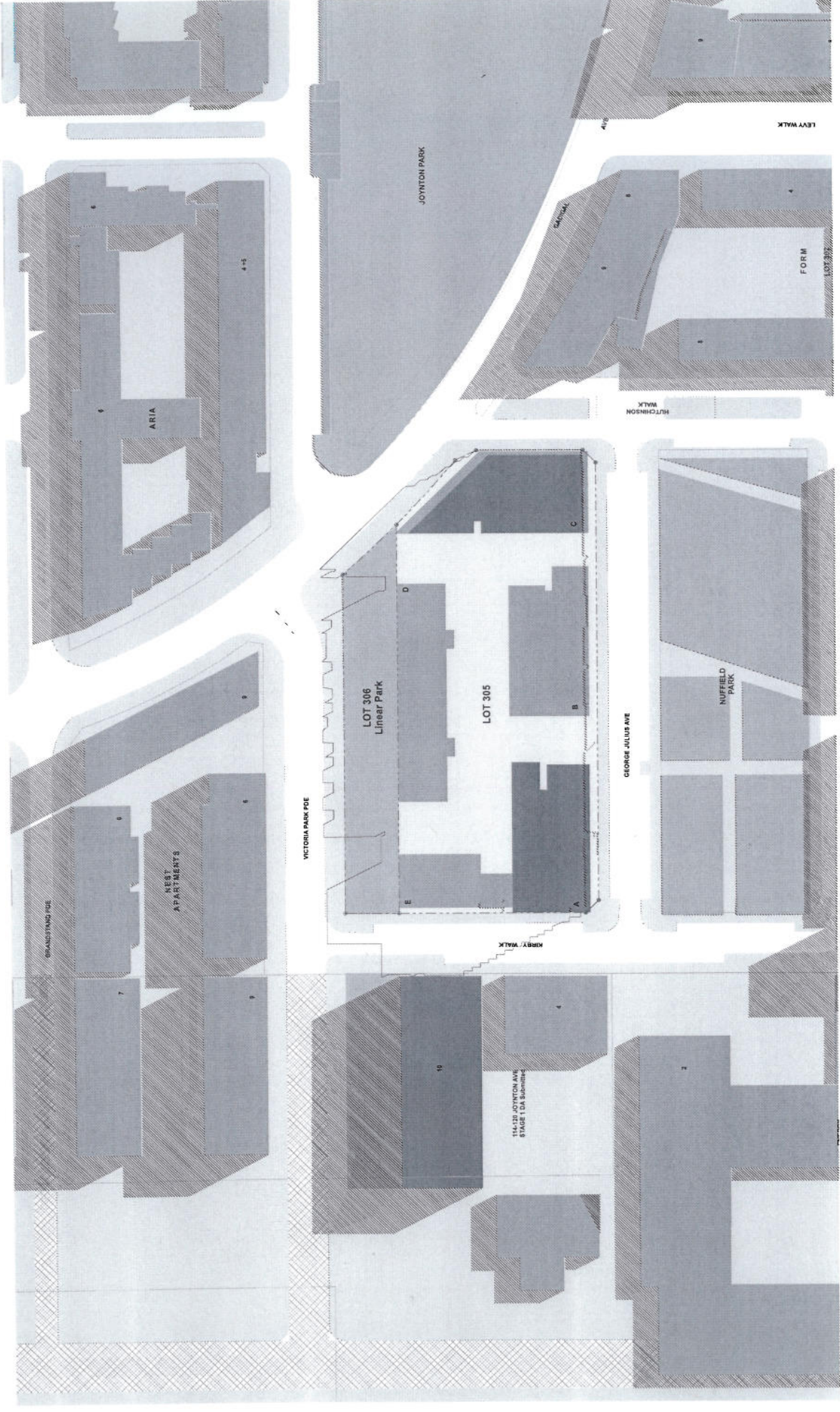
**NOTE:** THIS PLAN IS A PRELIMINARY DESIGN AND IS SUBJECT TO APPROVAL BY THE LOCAL GOVERNMENT. THE DESIGNER ACCEPTS NO LIABILITY FOR ANY LOSS OR DAMAGE CAUSED BY THE USE OF THIS PLAN.

DATE	14/03/2012	NT	DA Sweeney - PG Council
REV	1000	11019	11019
FOR INFORMATION	DA402	DA402	D
<b>TURNER + ASSOCIATES</b>			
1/171 20th Ave, Suite 201, Adelaide SA 5000			

Lot 305 + Lot 306, Victoria Park  
 1 Hildesheim Walk, Adelaide  
 June 2011  
 Site Analysis

Health No.27 Pty Ltd

# ATTACHMENT A



**Legend**

- Existing Structures
- All additional structures and all proposed structures

**NOTES**

1. All dimensions are in meters unless otherwise stated.
2. All dimensions are to the centerline of the structure unless otherwise stated.
3. All dimensions are to the centerline of the structure unless otherwise stated.
4. All dimensions are to the centerline of the structure unless otherwise stated.

Project No.	14-05-2012	NT	DA Submittal - 1st General
Date	Approved by	Author	11/019
Scale	1:1000	Sheet No.	DK
Project Name	114-120 JOYNTON AVE	DA No.	DA403
Client	TURNER + ASSOCIATES	Scale	D
Author	TURNER + ASSOCIATES	Scale	D
Project Address	114-120 JOYNTON AVE, VICTORIA VIC 3184	Scale	D
Project Description	114-120 JOYNTON AVE, VICTORIA VIC 3184	Scale	D

PROJECT TITLE  
 Lot 305 + Lot 306, Victoria Park  
 114-120 JOYNTON AVE, Victoria  
 Dis. Sim  
 Scale Analyst

DATE  
 14/05/2012  
 PROJECT NO.  
 14-05-2012  
 SHEET NO.  
 DK  
 PROJECT NAME  
 114-120 JOYNTON AVE  
 CLIENT  
 TURNER + ASSOCIATES  
 SCALE  
 D

114-120 JOYNTON AVE  
 STAGE 1 DA Submittal

114-120 JOYNTON AVE  
 STAGE 1 DA Submittal

114-120 JOYNTON AVE  
 STAGE 1 DA Submittal

114-120 JOYNTON AVE  
 STAGE 1 DA Submittal

114-120 JOYNTON AVE  
 STAGE 1 DA Submittal

# ATTACHMENT A



**Legend**

- Existing Structures
- Additional Structures Lot 30 property development

1:100  
 114-029 JOYNTON AVE  
 STAGE 1 DA submitted

Rev	Date	By	Appr'd By	Project Name	Scale	Sheet No.	Total Sheets
0	14.05.2012	NT	DA	114-029 - Lot 306	1:100	10/10	10
				FOR INFORMATION	DA004	02	01

**TURNER + ASSOCIATES**  
 114-029 JOYNTON AVE - STAGE 1 DA

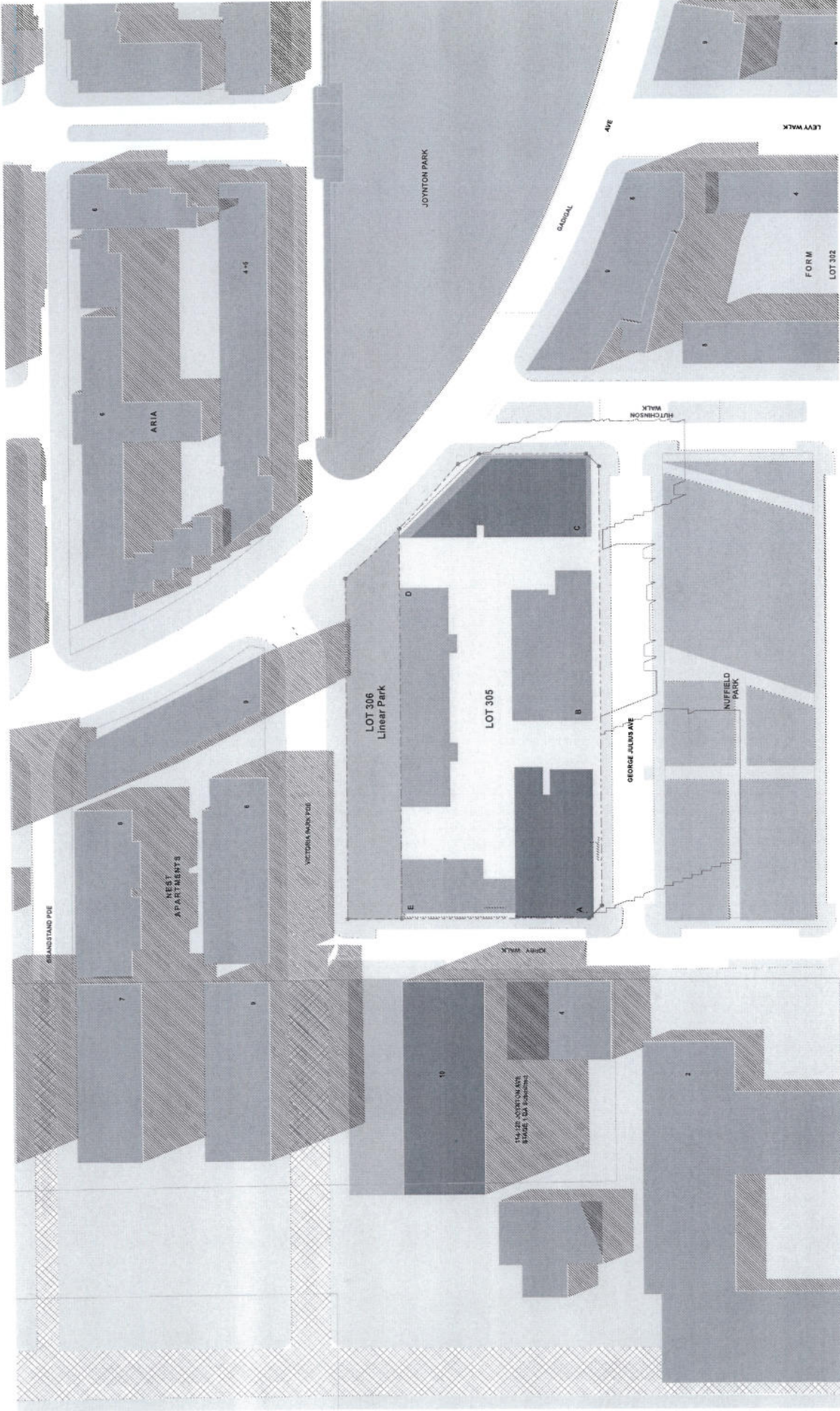
114-029 JOYNTON AVE  
 Lot 305 + Lot 306, Victoria Park  
 1 Hutchison Walk, Zealand  
 114-029 JOYNTON AVE - STAGE 1 DA  
 Dec 12pm  
 Solar Analysis

114-029 JOYNTON AVE  
 STAGE 1 DA submitted

114-029 JOYNTON AVE  
 STAGE 1 DA submitted

114-029 JOYNTON AVE  
 STAGE 1 DA submitted

# ATTACHMENT A



**Legend**

- Existing Structures
- Additional structures and proposed development

DATE	14.03.2012	BY	DA MARRAS - For Consent
REVISED DATE	11.01.13	BY	DA MARRAS
PROJECT INFORMATION	DA405	NO.	D
<b>TURNER + ASSOCIATES</b>			
111, 2, 418, 800 - 11, 7, 888, 001			

PROJECT TITLE  
**Lot 305 + Lot 306, Victoria Park**  
 1 Nuffield Walk, Zealand  
 PROJECT NO.  
**DA405**  
 DRAWING NO.  
**Site Analysis**

DATE  
 14.03.2012  
 PROJECT NO  
**DA405**  
 PROJECT TITLE  
**Lot 305 + Lot 306, Victoria Park**  
 1 Nuffield Walk, Zealand  
 PROJECT NO.  
**DA405**  
 DRAWING NO.  
**Site Analysis**

